

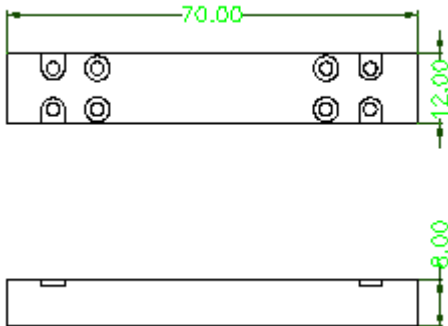
## (2+1)x1 PM Fiber Multimode Fiber Combiner

<b>Features</b>	
High Coupling Efficiency & Low Insertion Loss High Power High stability and reliability	
<b>Application</b>	
Fiber Laser	

### Specification

Type	Working Wavelength (nm)	Input pump	Input signal	Output fiber	Signal IL	Pump Effi.	ER (dB)
PM (2+1)x1	1060	105/125 0.22	PM 980	PM 10/125 DCF	<0.7dB	>90%	>18dB
PM (2+1)x1	1060	105/125 0.22	PM 6/125 DCF	PM 6/125 DCF	<0.5dB	>90%	>20dB
PM (2+1)x1	1060	105/125 0.22	PM 10/125 DCF )	PM 10/125 DCF	<0.5dB	>90%	>20dB
PM (2+1)x1	1060	105/125 0.22	PM 20/125 DCF	PM 20/125 DCF	<0.5dB	>90%	>20dB
PM (2+1)x1	1060	200/220 0.22	PM 25/250 DCF	PM 25/250 DCF	<0.7dB	>85%	>18dB
PM (2+1)x1	1550	105/125 0.22	PM 1550 DCF	PM 1550 DCF	<0.5dB	>90%	>20dB

### Package Dimensions



### Ordering Information

PMMPCC	Port Type	Pump fiber	Signal fiber	Output fiber	Length	Package
	(2+1)x1	105/125 0.22	PM 980 Xx=Specify	PM 6/125 DCF XX: Specify	0.8=0.8m 1=1m	70x12x8